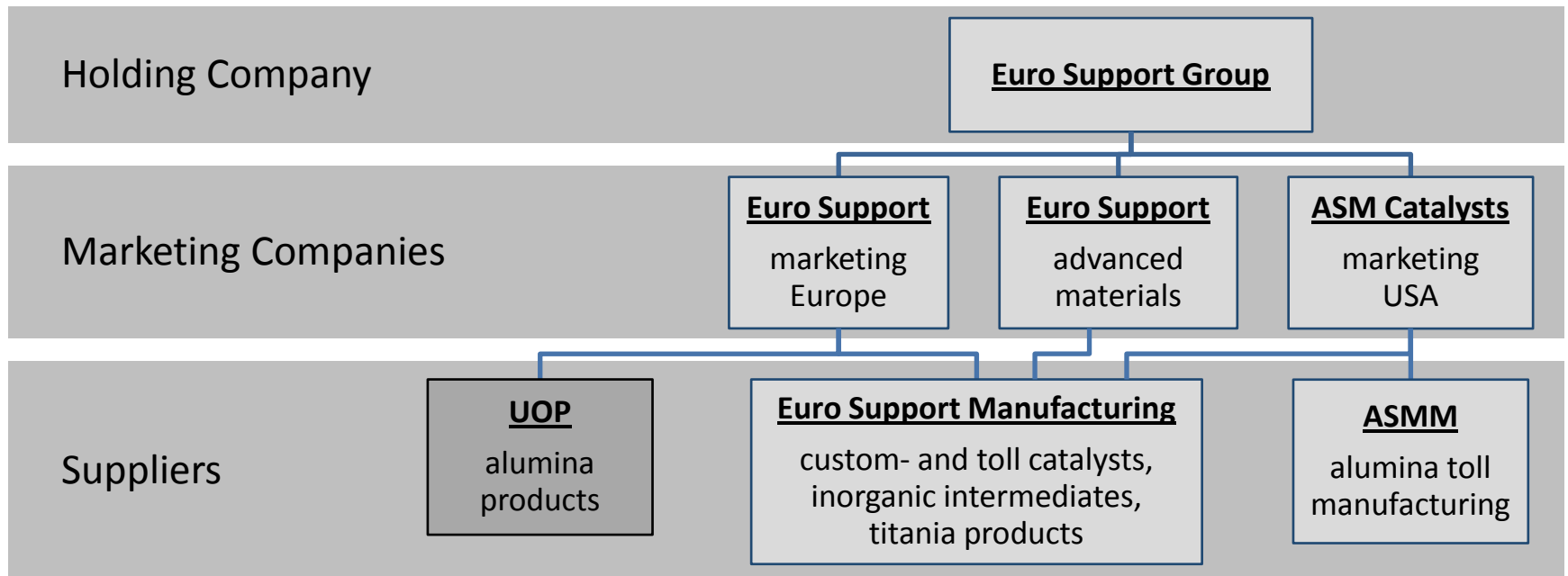




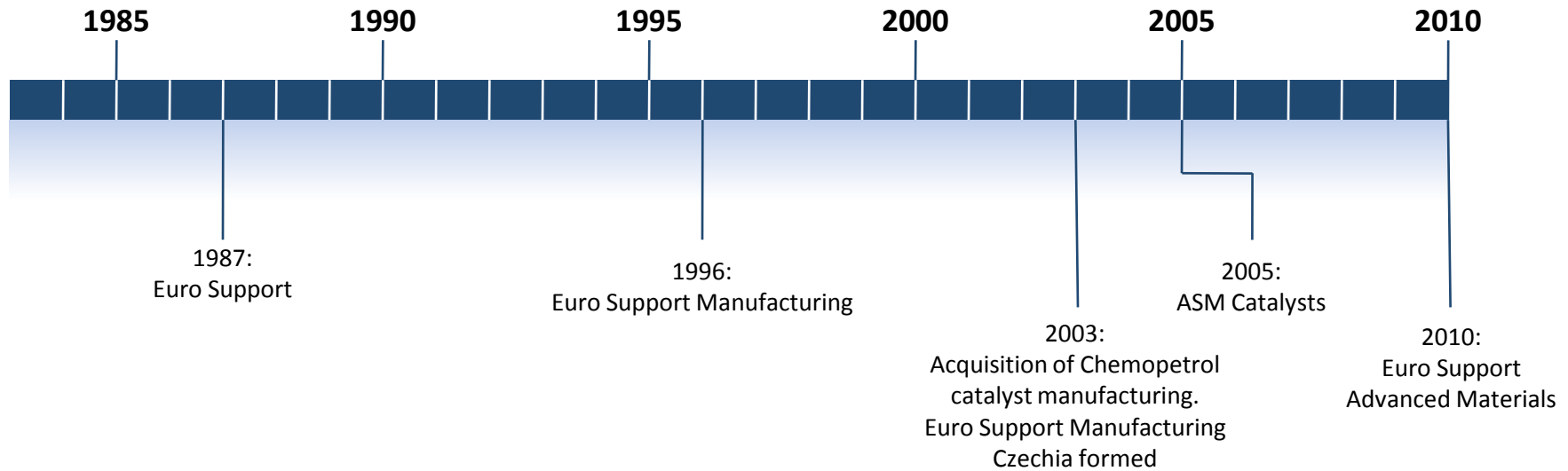
Euro Support

manufacturing of catalysts, adsorbents and inorganic intermediates

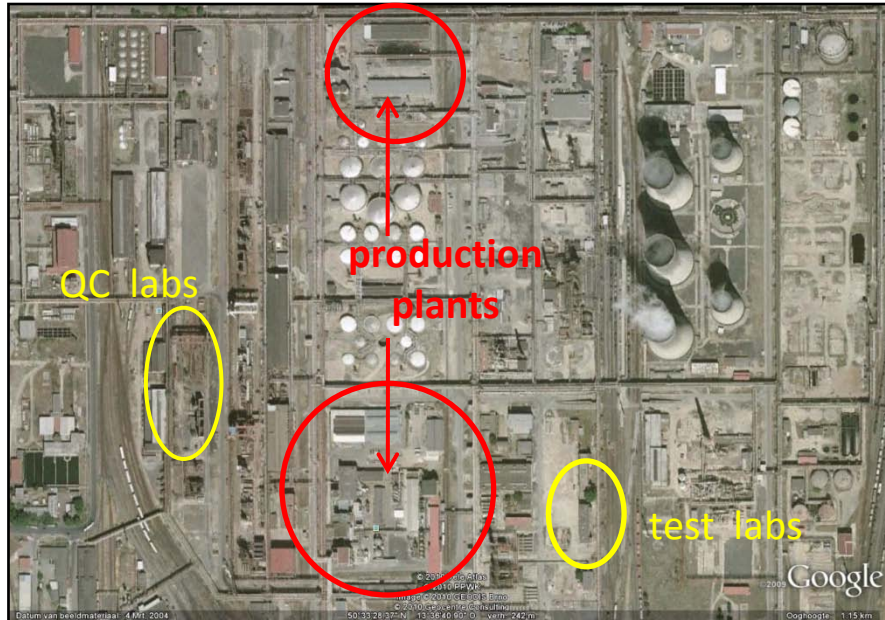
Corporate Structure



Group History



Euro Support Manufacturing – Litvínov, Czech Republic



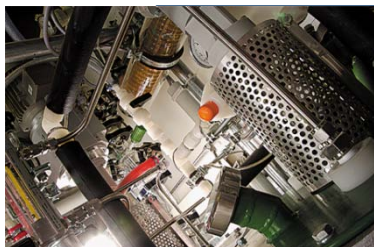
Locations



Euro Support Head office
Amersfoort, The Netherlands
9 employees



Euro Support Manufacturing
Litvinov, Czech Republic
125 employees



Euro Support
advanced materials
Uden, the
Netherlands



ASM Catalysts
Baton Rouge, USA
2 employees

Business Activities

Production and toll processing (from kgs to tonnes per day)

- Toll manufacturing of catalysts and inorganic intermediates
- Custom catalysts
- Catalytic grades of titania and zirconia
- Applications testing

Sales and Distribution

- Claus catalysts
- Activated alumina adsorbents
- Ceramic balls
- Services of ESMC and ASMM

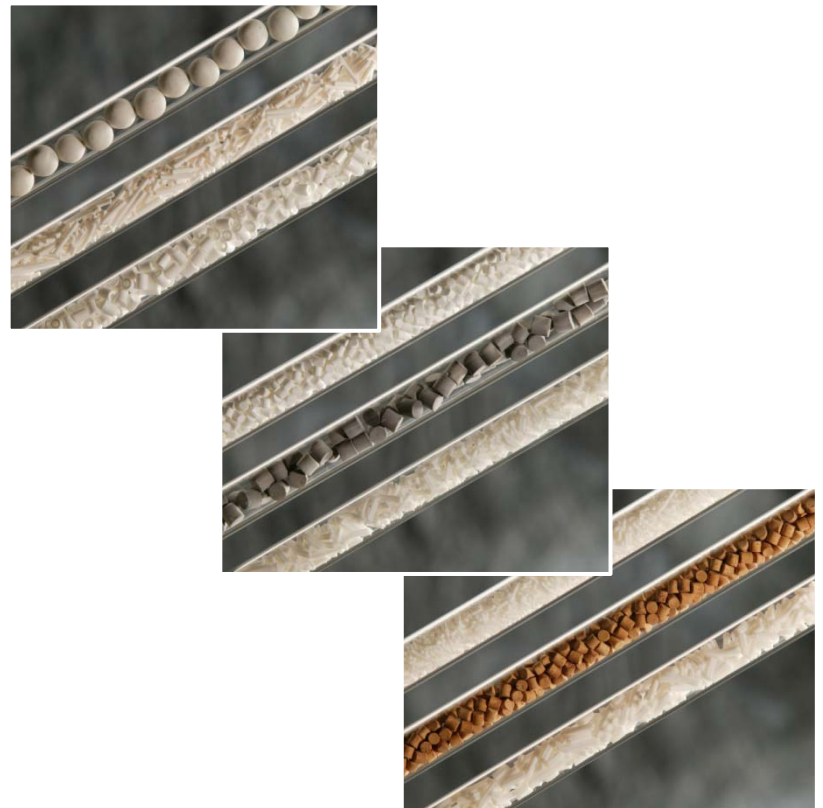
Products

Inorganic materials

- Al_2O_3
- SiO_2
- TiO_2 (cooperation with Sachtleben)
- ZrO_2
- mixed oxides
- layered structure materials
- zeolites

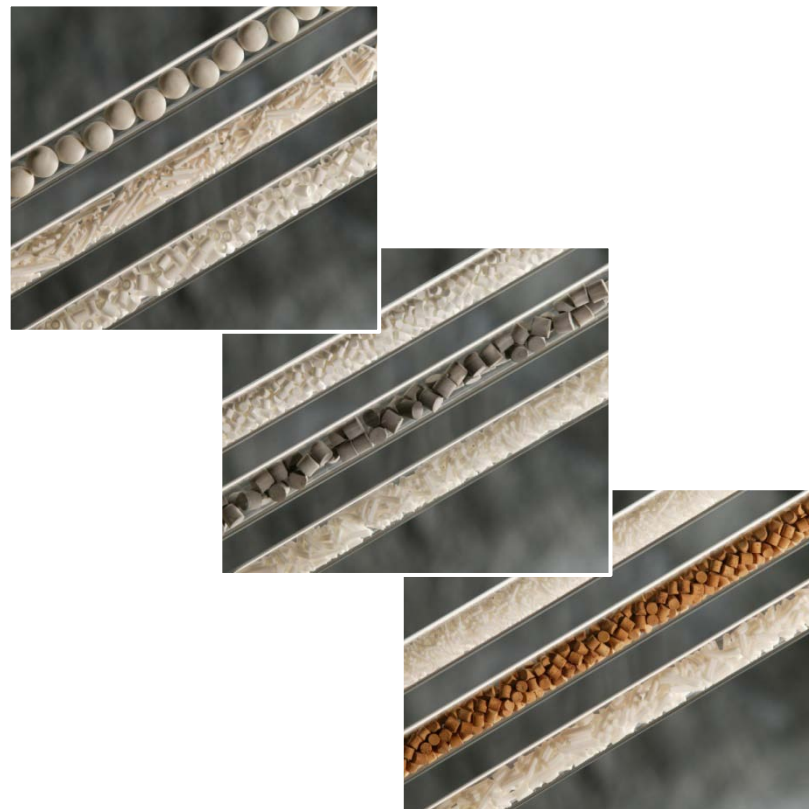
Catalysts

- slurry phase catalysts
- fluidized bed catalysts
- fixed bed catalysts
 - tablets
 - ring tablets
 - extrudates
 - spheres
 - granules



Catalysts

- Catalyst supports
- Proprietary & Custom Catalysts
- Claus catalysts
- Guard catalysts
- Cu based hydrogenation catalysts
- DeNOx in nitric acid plants
- Synthetic clays
- Zeolite based catalysts



Production Technologies

Shaping

- tablets
- ring tablets
- extrudates
- spheres
- granules



Impregnation

- powders
- shaped bodies
- existing catalysts

Precipitation

- sequential
- co-precipitation



Production Technologies

Drying

- belt drying
- tray drying
- rotary kiln drying
- spray drying

Calcination

- Stationary calcination
- Rotary calcination
- Tunnel kiln calcination

Milling

Granulation/Compaction



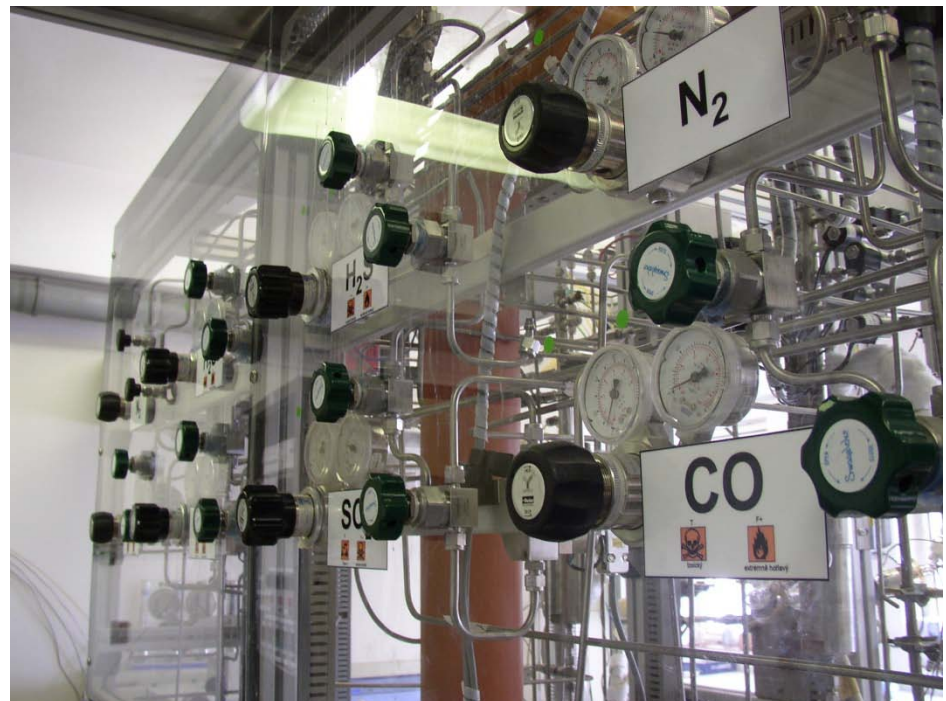
Applications testing

Refinery & Petrochemical Applications

- HDS/HDN
- Hydration
- Hydrogenolysis
- Shift reactions
- Isomerisation

Tail-gas processes

- Claus conversion
- COS/CS₂ hydrolysis
- H₂S oxidation
- Oxidation of organic sulfur
- SO₂ reduction
- Scavenging reactions
- Flue gas desulfurisation



Applications testing

Nitrobenzene hydrogenation

DeNO_x

Characterisation of catalysts

- composition analysis
- porosity analysis
- ASTM and tailored characterisation
- thermogravimetric analysis
- electron microscopy



Contact Information

ESM

Kortegracht 26
3811 KH AMERSFOORT
The Netherlands
Tel: +31 33 465 0465
Fax: +31 33 465 0721
E-mail: eurosupport@eurosupport.nl

ASM

ASM Catalysts, LLC (a Euro Support company)
8550 United Plaza Blvd., Suite 702
Baton Rouge, LA 70809-0200
USA

Tel: 1 (225) 752-4276
Fax: 1 (225) 922-4550
Cell: 1 (225) 368-7775

john.hutchison@asm-catalysts.com
john.hutchison@eurosupport.nl
info@asm-catalysts.com
www.asm-catalysts.com

